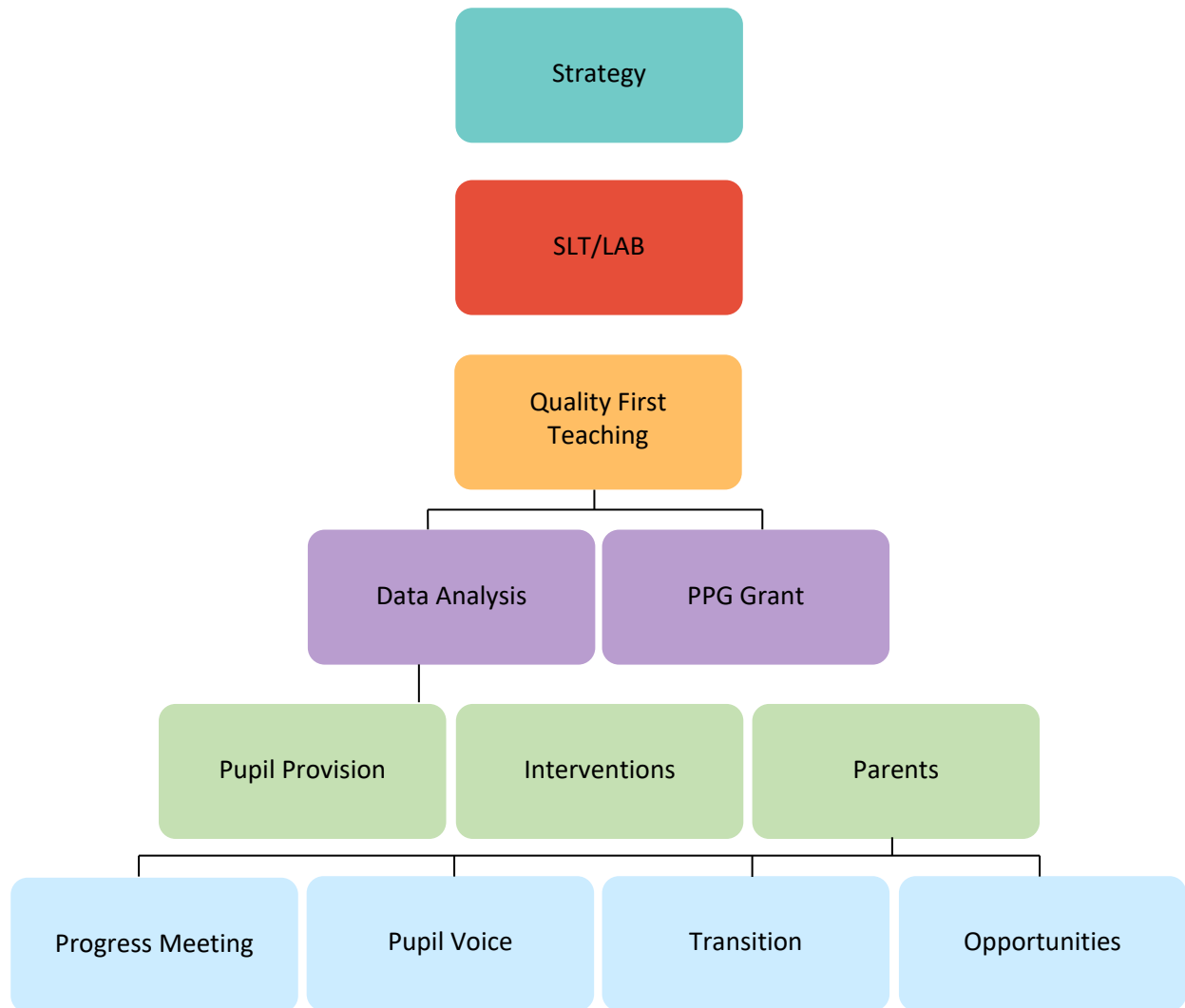




Nine Mile Ride  
Primary School

How Nine Mile Ride meets the need of disadvantaged pupils by adopting a whole school approach



<p><b>Strategy</b></p> <ul style="list-style-type: none"> <li>• 3 year strategy</li> <li>• Achievement - emotional/learning</li> <li>• School Development Plan- 1 year focus</li> <li>• Pupil Premium Grant (PPG) strategy</li> <li>• Wellbeing of pupils</li> <li>• Professional growth</li> <li>• Environment that is conducive to learning</li> </ul>	<p><b>SLT/LAB</b></p> <ul style="list-style-type: none"> <li>• Leadership focus on PPG</li> <li>• Book scrutiny/lesson observations/learning walks</li> <li>• Performance management Headteacher/Senior Leadership Team (SLT)/teachers/Teaching Assistants (TAs)</li> <li>• CPD planned with PPG in mind-stretch &amp; challenge/growth mindset/use of the TAs</li> <li>• Reporting to local advisors termly</li> <li>• PPG local advisor liaises with Inclusion Manager</li> <li>• Staffing organised to meet the needs of the pupils</li> <li>• Employ Inclusion TAs</li> <li>• Employ PPG TAs</li> <li>• PPG networks &amp; conferences attended</li> <li>• Agenda items at SLT/Staff/Team meetings</li> </ul>	<p><b>Quality First Teaching</b></p> <ul style="list-style-type: none"> <li>• All children catered for through differentiation</li> <li>• In class support from TA</li> <li>• Teachers write PPG provision plan and review termly with Inclusion Manager</li> <li>• PPG progress meeting happen termly-so what, now what?</li> <li>• Red Children Action Plan (RCAPS) written and analysed termly for impact</li> <li>• Data scrutiny</li> <li>• Performance Management</li> <li>• Marking and feedback</li> <li>• Book scrutiny</li> </ul>	<p><b>Data analysis</b></p> <ul style="list-style-type: none"> <li>• Ongoing daily mark books</li> <li>• Tracking for progress/attainment</li> <li>• Data capture points every term</li> <li>• Inclusion TAs carry out baseline and retested throughout the year</li> <li>• All assessment drives interventions</li> <li>• Needs of the pupils drive TA deployment</li> <li>• RCAPS written in teams and progress/attainment carefully tracked</li> </ul>
<p><b>PPG grant</b></p> <ul style="list-style-type: none"> <li>• Document that identifies barriers to learning</li> <li>• Baseline recorded and revisited termly <ul style="list-style-type: none"> <li>• Interventions recorded and changes made as appropriate</li> <li>• Snapshot of all PPG pupils achievements in school</li> </ul> </li> </ul>	<p><b>Pupil Provision Map</b></p> <ul style="list-style-type: none"> <li>• Individual map to meet the needs, based on what data has shown</li> <li>• Interventions planned and delivered barriers identified</li> <li>• Accurate identification of PPG/SEND</li> </ul>	<p><b>Interventions</b></p> <ul style="list-style-type: none"> <li>• Planned in light of data analysis</li> <li>• PiXL (Partners in Excellence)</li> <li>• 1:1/group/pairs</li> <li>• Staff allocated as appropriate</li> <li>• 3 dedicated PPG members of staff</li> <li>• Class interventions planned by teacher</li> <li>• Thrive-emotional needs planned for in class/group/individual</li> </ul>	<p><b>Parents</b></p> <ul style="list-style-type: none"> <li>• Meetings with class teacher/inclusion manager as appropriate</li> <li>• Parent workshops - anxiety/growth mindset</li> <li>• Parent evenings-follow up calls for PPG parents that don't attend</li> <li>• Attendance tracked and followed up</li> </ul>
<p><b>Progress Meetings</b></p> <ul style="list-style-type: none"> <li>• Termly meetings with a laser focus on PPG pupils to ensure progress &amp; attainment</li> <li>• Followed up and monitored closely by members of SLT</li> <li>• So what, now what?</li> <li>• Minutes recorded and actions carried out</li> </ul>	<p><b>Pupil voice</b></p> <ul style="list-style-type: none"> <li>• Pupil survey-what it's like to be a PPG at this school? Done yearly. Actions carried out as appropriate</li> </ul>	<p><b>Transition</b></p> <ul style="list-style-type: none"> <li>• Transition planned between pre-school and FS and Year 6 and secondary</li> <li>• Extra visits/transition books as appropriate</li> </ul>	<p><b>Opportunities</b></p> <ul style="list-style-type: none"> <li>• Trips</li> <li>• Clubs</li> <li>• Music</li> <li>• Represent school in sport/music. Examples are golf, Boccia, cheerleading, choir</li> </ul>